

Heart of Alaska

Denali Explorer 2011

7 night cruise/4 night land tour
aboard the *Coral* or *Island Princess*

May 21 - June 1

June 18 - 29

July 19 - 30

August 2 - 13

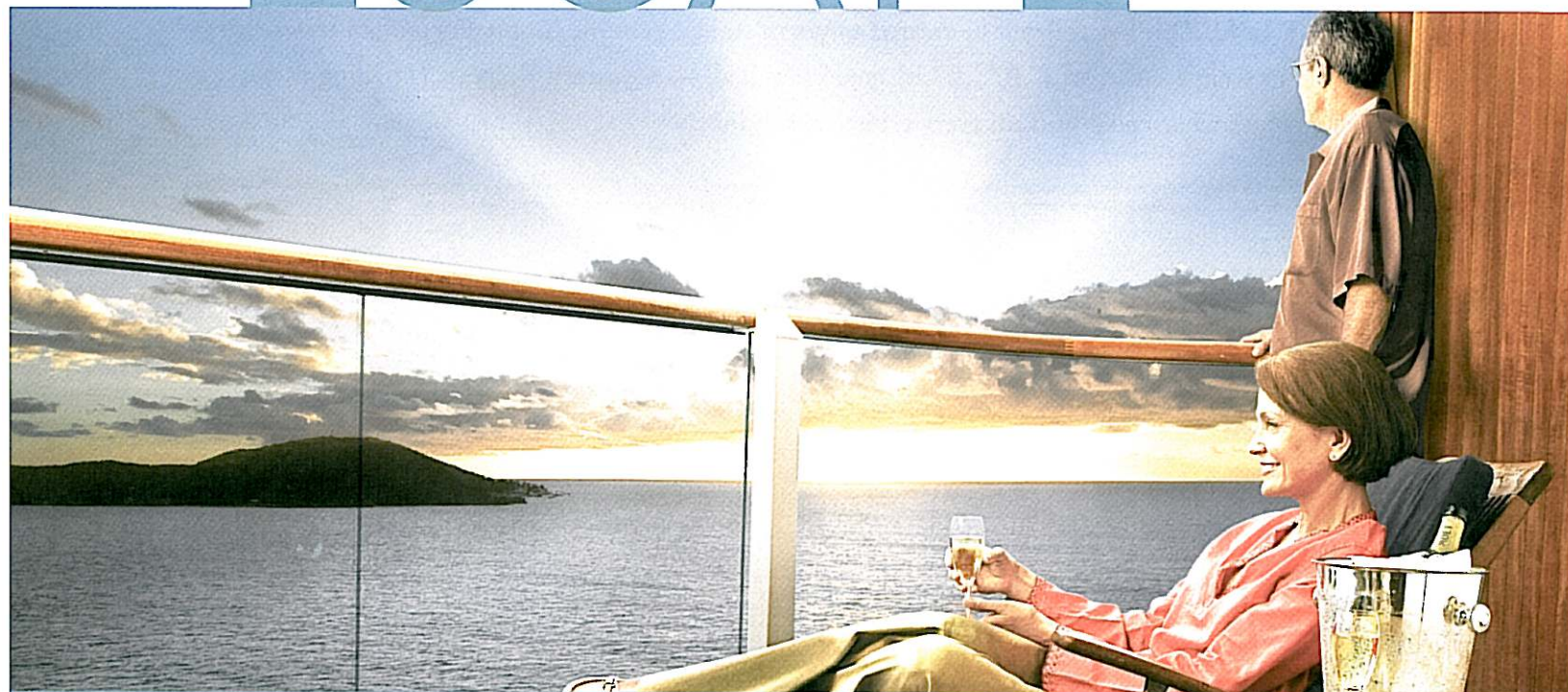
September 10 - 21

featuring

- *luxurious Princess Wilderness Lodges*
- *cruising past Hubbard Glacier and through Glacier Bay National Park*
- *port visits in Skagway, Juneau, and Ketchikan!*

Set sail on an unforgettable Princess

ESCAPE



SPECTACULAR SHIPS • AFFORDABLE BALCONIES • WORLD-CLASS DINING & ENTERTAINMENT

Touching the Heart of Alaska

is a PEAK EXPERIENCE with Princess!

Day 1 - hometown/Fairbanks

Fly today from your hometown to Fairbanks, where you are met and transferred to your hotel for overnight.

Day 2 - Fairbanks/Denali

You'll be immersed in everything Alaskan as you glide along the Chena River during your nostalgic Sternwheeler Riverboat Cruise. This afternoon transfer by motorcoach to Denali for check-in at the **Denali Princess Wilderness Lodge** where you can soak up your surroundings wrapped in Princess comfort, with the remainder of the day at leisure.

Day 3 - Denali

Wake up feeling rested and fully alive. During your Natural History Tour you'll get a fascinating overview of Denali National Park's flora and fauna. And, weather permitting, you'll catch a glimpse of dazzling Mt. McKinley from Primrose Ridge. Enjoy another night at the **Denali Princess Wilderness Lodge**.

Day 4 - Denali/McKinley

Relax during a leisurely morning surrounded by the sights and sounds of nature. This afternoon transfer by motorcoach to the lovely **Mt. McKinley Princess Wilderness Lodge**, which features enormous floor-to-ceiling windows that look out on Mt. McKinley and the Alaska Range -- with one of the most inspirational views of The Mountain found anywhere.

Day 5 - McKinley/Whittier

Transfer to the train station this morning and board the McKinley Express for a journey among magnificent scenery to Whittier, where you embark on your seven-day cruise. (D)

Day 6 - Hubbard Glacier (3:00p.m./8:00p.m.)

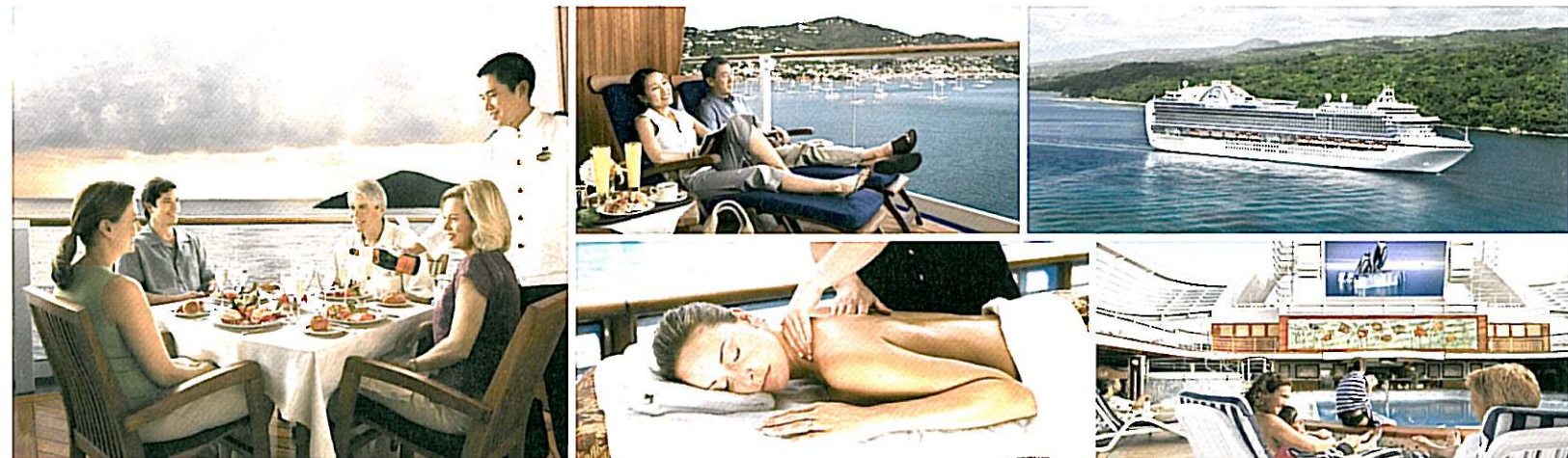
Enjoy breathtaking beauty as you sail today. This afternoon view Hubbard Glacier, the longest tidewater glacier in Alaska, which routinely calves off icebergs the size of a ten-story building! (B,L,D)

Day 7 - Glacier Bay National Park (10:30 a.m./8:30 p.m.)

Today enjoy more spectacular glacial views as you cruise through pristine Glacier Bay National Park. Keep your camera handy! (B,L,D)

Day 8 - Skagway (7:00 a.m./8:30 p.m.)

Skagway, at the north end of the Lynn Canal, is the gateway to Gold Rush Country and the heart of Klondike Gold Rush National Park. It was a mighty lively place in the gold rush days and still is -- and it looks much the same, with worn boardwalks, false-fronted buildings, and old-time saloons. An optional activity that is a good way to catch the flavor is to drop in on the hilarious "Days of '98" show. Or, you may want to take a ride on the narrow-gauge White Pass & Yukon Route railroad. (B,L,D)



Day 9 - Juneau (8:30 a.m./4:00 p.m.)

Make a stop at Alaska's capital, the first city founded in Alaska after the American purchase in 1867. Explore on your own, or shop for native crafts and gold nuggets. Take an optional tour to the U.S. Forest Service Observatory and Visitor Center for a close-up look at the mighty Mendenhall Glacier. On the way back to town, visit the Chapel by the Lake, a little log church with a truly inspiring view of Auke Lake and Mendenhall Glacier. (B,L,D)

Day 10 - Ketchikan (10:00 a.m./6:00 p.m.)

Established in 1887 as an Indian fishing camp, Ketchikan is now an important mining, logging and fishing town, known as the Salmon Capital of the World. Be sure to go ashore: you may choose to inspect the excellent display of native Alaskan art and artifacts at the Tongass Historical Society Museum, or take an optional tour to Saxman Village to watch native carvers at work. (B,L,D)

Day 11 - Inside Passage

Relax in the luxurious surroundings of your Princess ship while cruising through the 1,000-mile-long inland waterway of the Inside Passage. Be sure to keep watch for wildlife and native fishing villages as you enjoy the views of this magnificent waterway. And there's plenty to do on a Princess ship; check the daily newsletter for scheduled activities. (B,L,D)

Day 12 - Vancouver (arrive 7:30 a.m.)

Arrive to Vancouver and disembark, then transfer to the airport for your return flight home. (B)

Price of Cruise/Land Tour including Port Charges & Transfers:

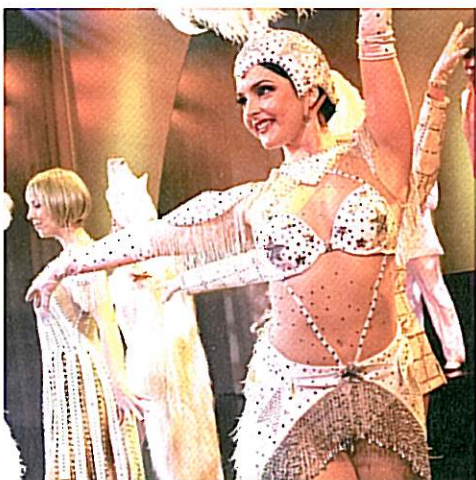
	May 21	June 18	July 19	Aug 2	Sep 10
JJ, Interior	\$1779	\$2379	\$2429	\$2429	\$1579
EE, Oceanview	\$2229	\$3129	\$3229	\$3229	\$1979
BD, Private balcony	\$2449	\$3379	\$3479	\$3479	\$2179

(May 21, June 18, Sep 10 sailing on *Island Princess*; July 19, Aug 2 sailing on *Coral Princess*)

NOT INCLUDED in the above rates:

- Airfare (cost dependent upon hometown departure city);
- Air taxes (dependent on departure city & subject to change prior to departure);
- Government Fees (\$92);
- Gratuities (\$10.50 per day on cruise, collected on board ship; \$5 per day land);
- and Princess fuel surcharge (up to \$9 per day, cruise).

Please note that certain cabin types may be limited in availability and are assigned on a first come, first served basis.



If you have previously sailed with Princess and have a Princess Captain's Circle membership number, be sure to include it on your enrollment!

Terms & Conditions

PAYMENT: A deposit of \$800 per person is required at the time of booking. **Final payment is due upon receipt of final invoice, approximately 12 weeks prior to departure.**

AIRARRANGEMENTS: Princess Cruise Lines offers low air fare add-ons from most major U.S. cities. These fares include airfare to Fairbanks and return fare home from Vancouver. Air taxes depend on departure city and are subject to change prior to departure. Please contact Dehoney Travel for pricing information from your preferred departure city.

HOTELS: Overnights are arranged by Princess Tours in Princess Wilderness Lodges and a four or five-star hotel in Fairbanks.

DINING: First seating is requested for all passengers unless Dehoney Travel, Inc. is notified to the contrary. Because Princess processes dining requests in the order in which they are received, dining requests are not guaranteed.

NOT INCLUDED IN CRUISE/LAND TOUR RATE: Airfare & taxes (costs depend on city of departure); government fees (\$92); Travel Protection Plan; any Princess fuel surcharge (up to \$9 per day, cruise); gratuities (approximately \$10.50 per day during cruise and \$5 per day during tour portion); meals during tour portion; items of a personal nature.

TRAVEL DOCUMENTATION: A passport is required for this cruisetour.

CHANGES: A \$100 service fee will be charged for changes made to existing tours within 40 days of departure. Changes of departure date or tour are considered a cancellation and a new booking. The service fee will not be assessed when upgrading cruise accommodations.

CANCELLATION: In event of cancellation, there will be a fee of \$100 for Dehoney Travel, Inc. to cover administrative costs. In addition, without protection as outlined below, cancellations made within 80-62 days prior to departure will be charged the amount of \$800. Within 61-34 days, 50% of total tour cost (including air add-on, taxes, and government fees) will be assessed; within 33-20 days prior, 75% of the total tour cost, (including air add-on, taxes, and government fees) will be assessed; within 19 days to day of departure/no show, tour cost is non-refundable. Any trip interruption due to illness, accident or family emergency is subject to 100% of the unused balance of the total tour cost. **Cancellation notifications must be made in writing to Dehoney Travel. Please allow up to four weeks for cancellation refund processing.**

Princess Tours reserves the right to cancel any scheduled tour prior to departure. In the event that this should occur after final payment has been received by Princess Tours, all payments will be refunded in full. Princess Tours reserves the right to use alternate means of transportation when tour passenger numbers warrant such substitution and also reserves the right to change show performances when not available.

TRAVEL PROTECTION PLAN: As cancellation penalties can be substantial for many tours, Dehoney Travel recommends the purchase of Princess Travel Protection. In order to maximize the value of your coverage, we recommend this purchase be made at time of deposit. **You may decline the Travel Protection Plan. However, a signed disclaimer is required and all charges for cancellation or medical treatment/transport while traveling are your responsibility.**

AIR TICKETS: Air tickets may be subject to cancellation/re-booking penalties. The cost of any cancellation or changes made once the ticket has been issued will be charged to the passenger. Special requests are subject to a deviation fee by the air department.

RESPONSIBILITY: Princess Tours/Dehoney Travel, Inc. and/or travel bureaus offer the cruise/tour outlined solely as agent for the companies and persons that provide the transportation, transfers, accommodations, sightseeing excursions, and other goods and services comprising the tours. The responsibility of Princess Tours and such companies and persons is set forth in the applicable voucher, coupon, receipt, ticket or tariff under which the particular goods and services are obtained. Details are available upon request.

Neither Princess Cruises, Princess Tours, Dehoney Travel, Inc. nor their owners, directors, officers, agents, servants, employees, affiliates or representatives own, operate, manage, control, inspect, distribute or warrant any non-owned vehicle, vessel, aircraft or equipment, or any hotel, restaurant or other establishment, or any product, premises or service, provided directly or indirectly in connection with any tour; nor are they or any of them responsible or liable for any accident, injury, illness, death, loss, damage, expense, delay or other irregularity of any nature whatsoever arising directly or indirectly from such to or from any part thereof due to any cause whatsoever, including negligence.



Dehoney Travel, Inc.

3008 Charlestown Crossing, New Albany, IN 47150

Phone: 812/206-1080 or 800/325-6708

Fax: 812/206-1085

Email: info@dehoneytravel.com

Website: www.dehoneytravel.com



6/11/10

#209, May 21

#211, June 18

#213, July 19

#215, Aug 2

#217, Sep 10

ALASKA\Heart 11 bro.indd



PRINCESS CRUISES

escape completely