

South China Sea Explorer

sailing Bangkok to Shanghai

and also visiting ports of

Ko Samui, Thailand - Singapore

Ho Chi Minh City & Da Nang, Vietnam

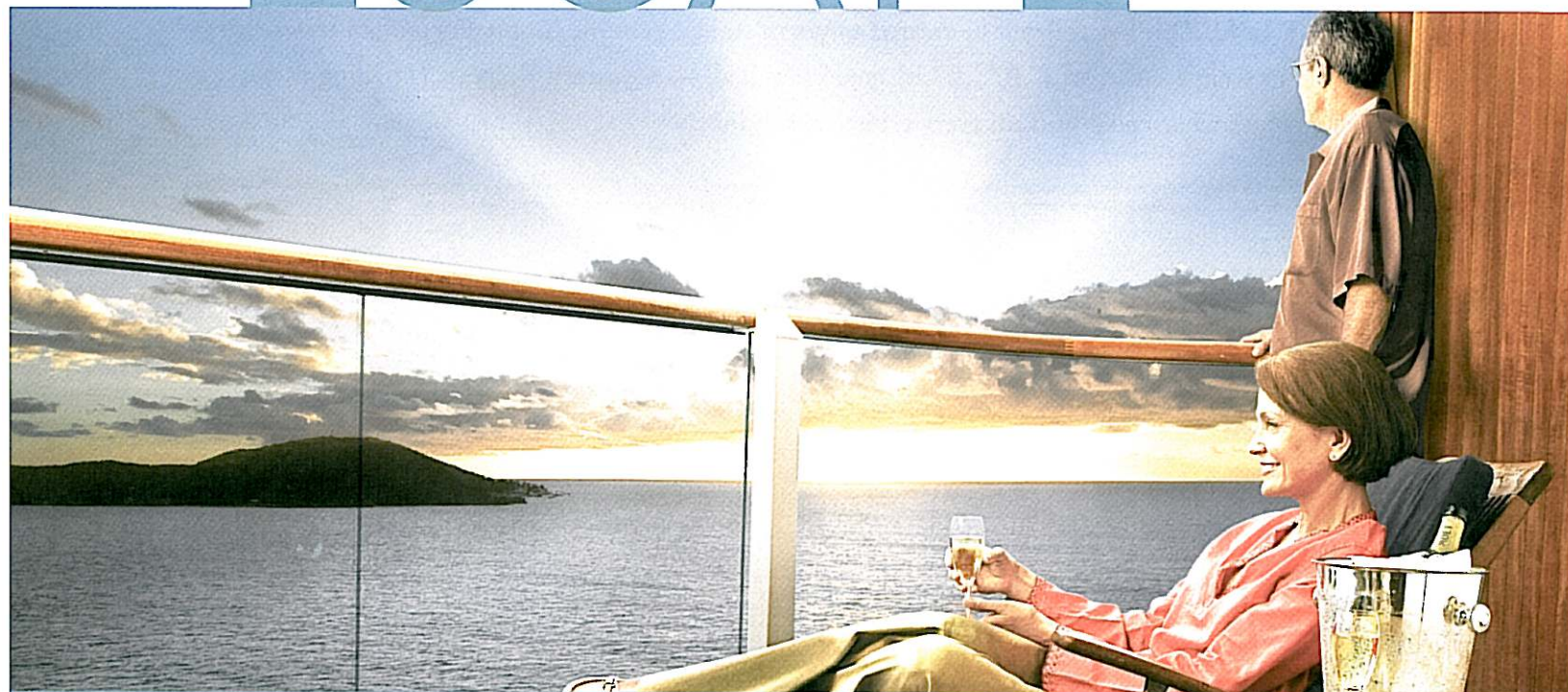
Hong Kong, China - Taipei, Taiwan

Okinawa, Japan

aboard the *Ocean Princess*

Set sail on an unforgettable Princess

ESCAPE



SPECTACULAR SHIPS • AFFORDABLE BALCONIES • WORLD-CLASS DINING & ENTERTAINMENT

Asia - wonderfully removed from your everyday world...

The most intriguing and unexpected places await you with Princess. The lush, jade-colored lands of China, Thailand and Japan, historic cities washed by the Indian Ocean and inland wonders too remarkable to miss. Sail past sampans into Hong Kong Harbor. Learn the art of Chinese kite-flying and see rice paddies where water buffalo graze. Places like these bring new meaning to the term "complete escape."

While you're sailing to your ports of call, you'll be treated to the premier cruising experience for which Princess is renowned. Relax by the pool. Meet new friends. Pamper yourself in the health and beauty center.

In the evening, dine on fine cuisine featuring Princess classics and contemporary new fare. Applaud original Broadway-style entertainment. And enjoy the friendly service which has been Princess Cruises' hallmark for the past 30 years.

Day 1 - embark Bangkok, sail 7pm

Welcome to Bangkok, where the Grand Palace, the Temple of the Golden Buddha and the floating markets surround you with the sights and sounds of Thailand. We transfer to the pier to board our ship, the *Ocean Princess*. Once on board, take some time to unpack and settle in before exploring your home for the next 16 nights. (D)

Day 2 - Ko Samui, Thailand, 10am/6pm

Visit the Temple of the Big Buddha and admire the 39-foot high Sitting Buddha statue erected in 1792. Tour a coconut plantation and watch monkeys harvest the ripe fruit. (B,L,D)

Day 3 - At Sea

Participate in your choice of on-board activities: browse the world-class art collection, shop in duty-free boutiques, relax in a hot tub, sun yourself on the deck with a book from the ship's library, exercise in a state-of-the-art gym, or pamper yourself in the spa; and at mealtimes take advantage of the ship's variety of dining options. (B,L,D)

Day 4 - Singapore, 9am/6pm

Immerse yourself in a kaleidoscope of wonders in this scintillating city. Explore from Little India and Chinatown to the souks and bazaars of Arab Street. Sip a Singapore Sling at the famed Raffles Hotel. And get a glimpse of the local flora and fauna at the Orchid Pavilion or Jurong Bird Park. (B,L,D)

Day 5 - At Sea. (B,L,D)

Day 6 - Ho Chi Minh City (Phu My), Vietnam, 9am/7pm

See the sights from the National History Museum to Chinatown's Sea Goddess Temple. Tour Reunification Hall, the former Presidential Palace that is now a museum and exhibition center. (B,L,D)

Day 7 - At Sea. (B,L,D)

Day 8 - Da Nang/Hue (Chan May), Vietnam, 7am/6pm

Visit the Imperial City Of Hue, a World Heritage Site that is Vietnam's most popular attraction. Explore the Imperial Citadel, modeled on Beijing's Forbidden City. Visit tomb of the Emperor Tu Doc, which features a royal palace in miniature, a pavilion overlooking a lake, gardens and the former royal hunting grounds. (B,L,D)

Day 9 - At Sea. (B,L,D)

Day 10 - Hong Kong, China, arrive 8am

From the tram atop Victoria Peak, Hong Kong looks serene. Up close, it bustles with the sights and sounds of life played out on its streets. Take it all in from Stanley Market to Aberdeen. Or learn the essence of Chinese cuisine during a cooking lesson. (B,L,D)



Day 11 - Hong Kong, China, depart 5pm

Enjoy a second day to explore the wonders of Hong Kong. (B,L,D)

Day 12 - At Sea.

(B,L,D)

Day 13- Taipei (Keelung), Taiwan, 7am/6pm

The bustling capital of Taiwan boasts the National Palace Museum housing the world's most impressive collections of Chinese treasures. For something more exotic, tour Snake Alley or the scenic beauty of Taroko Gorge. (B,L,D)

Day 14 - At Sea.

(B,L,D)

Day 15 - Okinawa, Japan, 6am/5pm

Japan's only subtropical prefecture offers diving in coral reefs plus sights like Shurijo Castle. Students of history will remember the battle for Okinawa as the largest amphibious invasion and last major campaign of the Pacific War. (B,L,D)

Day 16 - At Sea.

(B,L,D)

Day 17 - Shanghai, China, arrive 7am

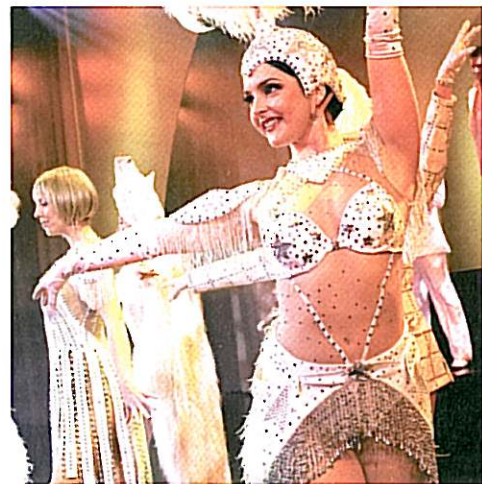
Arrive in port in Shanghai this morning and disembark. Skyscrapers and temples go hand in hand in this fascinating city. Before returning home perhaps take time to experience Old China on a train journey to Wuxi where you can visit one of China's most celebrated sites - Jichang Gardens. (B)

Ocean Princess is our pearl of the Pacific. Smaller in size yet rich in amenities this beautiful vessel features an array of onboard activities. Relax on deck by the pool or get a massage at the Lotus Spa®. At night, fine fare abounds in refined dining rooms and specialty restaurants, with live entertainment rivaling anything on shore. And this ship offers more than 200 balcony staterooms so you won't have to miss a single sunset!

**Price of Cruise including port charges
(per person based on double occupancy)**

Please contact Dehoney Travel for pricing information.

Not included in the above prices: Airfare (contact Dehoney Travel for pricing information) and air taxes (subject to any increase that may be imposed prior to departure); government fees; transfers; any Princess fuel surcharge; and gratuities.



Escape completely.®

If you have previously sailed with Princess and have a Princess Captain's Circle membership number, be sure to include it on your enrollment!

Terms and Conditions

PAYMENT: A deposit is required for booking. Full payment is due upon receipt of final invoice, approximately 12 weeks prior to departure.

AIR ARRANGEMENTS: Airfare and air taxes are not included in the cruise price. Princess Cruise Lines offers low air fare add-ons from most major U.S. cities. Dehoney Travel will compare Princess airfares with other options to ensure the lowest possible price.

DINING: First seating is requested for all passengers unless Dehoney Travel, Inc. is notified to the contrary. Because Princess processes dining requests in the order in which they are received, dining requests are not guaranteed. All meals aboard ship are included. Two breakfasts included on pre-cruise.

NOT INCLUDED IN CRUISE/TOUR PRICE: Airfare (contact Dehoney Travel for pricing information) and air taxes (subject to any increase that may be imposed prior to departure); government fees; transfers; Princess fuel surcharge; and gratuities. Travel Protection Plan; items of a personal nature; and any other item not specifically listed as being included.

TRAVEL DOCUMENTATION: A current passport is required for this cruise.

CHANGES: A \$50 service fee will be charged for changes made to existing tours within 45 days of departure. Changes of departure date or tour are considered a cancellation and a new booking. The service fee will not be assessed when upgrading cruise accommodations.

CANCELLATION: In event of cancellation, there will be a fee of \$100 for Dehoney Travel, Inc. to cover administrative costs. In addition, without protection as outlined below, cancellations made from 95-80 days prior to departure will be charged the amount of \$250. Within 79-62 days prior to departure, \$900. Within 61-34 days prior, 50% of the total tour cost, (including air add-on and tax) will be assessed. Within 33-20 days prior, 75% of the total tour cost, (including air add-on and tax) will be assessed; within 19 days to day of departure/no show, entire tour cost is non-refundable. Any trip interruption due to illness, accident or family emergency is subject to 100% of the unused balance of the total tour cost. **Please allow up to four weeks for cancellation refund processing.**

AIR TICKETS: Air tickets will be subject to cancellation/re-booking penalties. The cost of any cancellation or changes made once the ticket has been issued will be charged to the passenger. Special requests are subject to a deviation fee by the air department. **After ticketing of international air, a cancellation penalty of 100% of the air fare is in effect. On or after the date of departure there can be no refund for any service not used.**

Princess Tours reserves the right to cancel any scheduled tour prior to departure. In the event that this should occur after final payment has been received by Princess Tours, all payments will be refunded in full. Princess Tours reserves the right to use alternate means of transportation when tour passenger numbers warrant such substitution and also reserves the right to change show performances when not available.

TRAVEL PROTECTION PLAN: As many U.S. health carriers do not provide benefits while outside the country and cancellation penalties can be substantial for many tours, Dehoney Travel, Inc. offers a Travel Protection Plan, TripCare, through AccessAmerica. **The Option to Waive Pre-existing Condition requires purchase of Travel Protection within 14 days of deposit. You may decline the Travel Protection Plan, but a signed disclaimer is required and all charges for cancellation or medical treatment/transport while traveling are your responsibility.**

RESPONSIBILITY: Princess Cruises/Dehoney Travel, Inc. and/or travel bureaus offer the cruise/tour outlined solely as agent for the companies and persons that provide the transportation, transfers, accommodations, sightseeing excursions, and other goods and services comprising the tours. The responsibility of Princess Cruises and such companies and persons is set forth in the applicable voucher, coupon, receipt, ticket or tariff under which the particular goods and services are obtained. Details are available upon request.

Neither Princess Cruises, Dehoney Travel, Inc. nor their owners, directors, officers, agents, servants, employees, affiliates or representatives own, operate, manage, control, inspect, distribute or warrant any non-owned vehicle, vessel, aircraft or equipment, or any hotel, restaurant or other establishment, or any product, premises or service, provided directly or indirectly in connection with any tour; nor are they or any of them responsible or liable for any accident, injury, illness, death, loss, damage, expense, delay or other irregularity of any nature whatsoever arising directly or indirectly from such to or from any part thereof due to any cause whatsoever, including negligence.

*Cruise price based on cruise & land costs and current value of the U.S. Dollar and subject to any increase that may be imposed prior to departure.



Travel arrangements by
Dehoney Travel

3008 Charlestown Crossing, New Albany, IN 47150

Phone: 812/206-1080 or 800/325-6708

Fax: 812/206-1085

E-mail: info@dehoneytravel.com

www.dehoneytravel.com



M E M B E R



PRINCESS CRUISES

escape completely

11/25/09
CRUISES/China Explorer Jan 2011 bro web.indd