

# Holy Land

## Rome to Athens

Rome - Sorrento/Capri - Alexandria

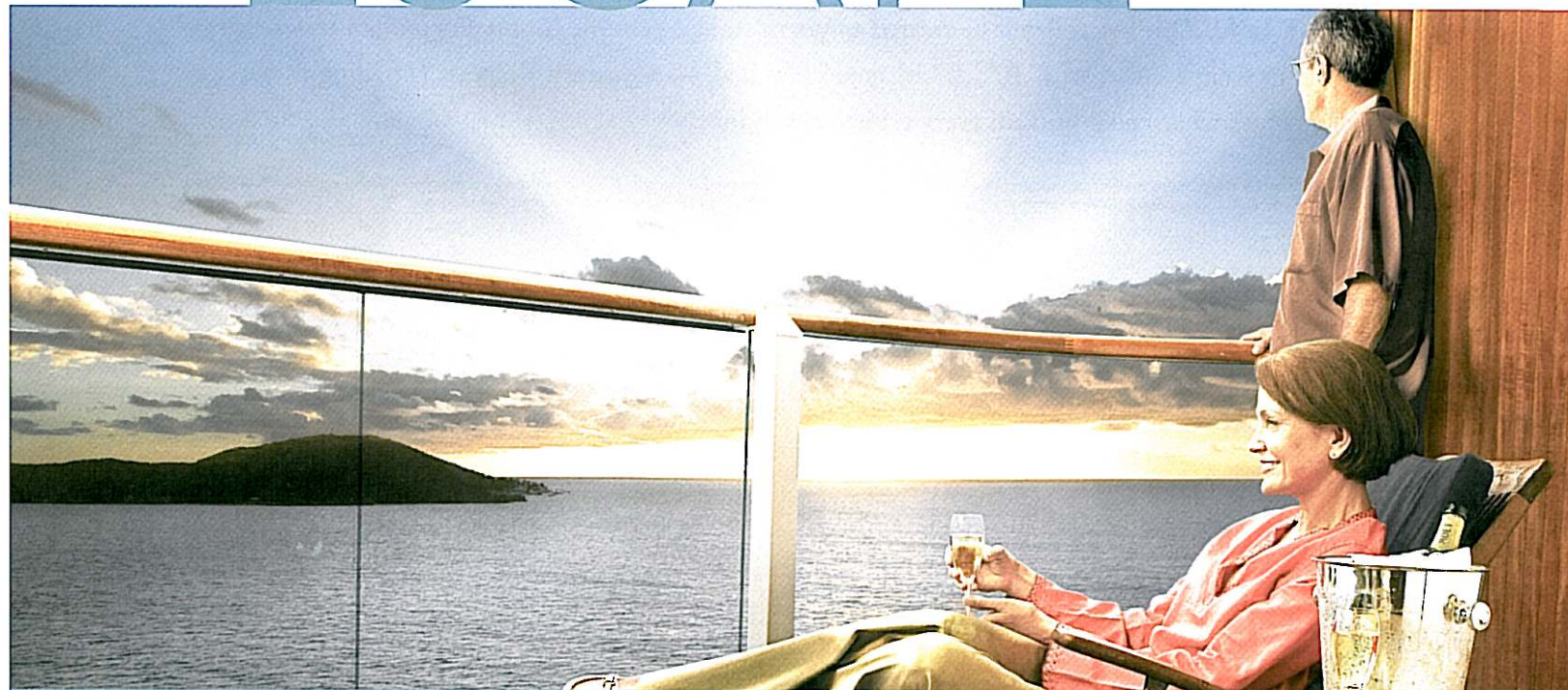
Cairo/Giza - Jerusalem - Galilee

Ephesus - Patmos - Santorini - Athens

aboard the *Royal Princess*

*Set sail on an unforgettable Princess*

# ESCAPE



SPECTACULAR SHIPS • AFFORDABLE BALCONIES • WORLD-CLASS DINING & ENTERTAINMENT

*Biblical history comes alive on this cruise! Embark from the spectacular "Eternal City" of Rome.*

*Enjoy ports that allow you to explore New Testament sites Galilee, Jerusalem, Ephesus and Athens. Along with Egypt, land of the Exodus and cradle of human history & culture, you also have time to relish the quaint islands and picture-perfect beaches of the Greek isles!*

---

**Day 1 - Depart USA**

(meals aloft)

**Day 2 - Arrive Rome (Civitavecchia)**

Your flight arrives in Rome. You could spend a month in the Eternal City and not see all the sights, such as the grand and imposing Colosseum, the Spanish Steps that were built to connect three main arteries of Rome, and Trevi Fountain where visitors toss in a coin to ensure that they will someday return. Upon arrival, transfer to the pier at Civitavecchia to board the *Royal Princess*, which sails this evening. (meals aloft,D)

**Day 3 - Sorrento/Capri, Italy, 8:00 a.m./6:00 p.m.**

Here is a resort town with a distinctly southern Italian flavor. The streets around the central Piazza Tasso invite aimless wandering. Take a drive along the breathtaking Amalfi Coast or travel to the colorful isle of Capri. (B,L,D)

**Day 4 - At Sea.**

Participate in your choice of on-board activities: browse the world-class art collection, shop in duty-free boutiques, relax in a hot tub, sun yourself on the deck with a book from the ship's library, exercise in a state-of-the-art gym, or pamper yourself in the spa; and at mealtimes take advantage of the ship's variety of dining options. (B,L,D)

**Day 5 - At Sea.**

(B,L,D)

**Day 6 - Alexandria, Egypt, 7:00 a.m./8:00 p.m.**

This once small fishing village is now a thriving Egyptian city. Explore its offerings - the modern Bibliotheca Alexandrina is designed as a state-of-the-art translation of Alexandria's ancient library; and Fort Qait Bey is built on the ruins of Faros Lighthouse, one of the Seven Wonders of the Ancient World. (B,L,D)

**Day 7 - Port Said (Cairo/Giza), Egypt, 12:00 p.m./8:00 p.m.**

From this beautiful port city, visit Cairo, a busy metropolis of modern buildings, wide boulevards, flowering gardens and stately mosques. You will be struck with the contrast of old and new! High-rise hotels line the Nile River while the white-sailed feluccas (ancient native boats) ply the waters. Visit the Sphinx and Great Pyramids, or take a luncheon riverboat cruise along the Nile. (B,L,D)

**Day 8 - Ashdod (Jerusalem), Israel, 7:00 a.m./8:00 p.m.**

A holy city for three of the world's great religions, modern Jerusalem is as vibrant as its history. Follow the footsteps of Christ along the Via Dolorosa, from the Garden of Gethsemane to Golgotha. Explore the sights, sounds, and aromas of the Old City; experience in awed reverence the Church of the Holy Sepulchre and Garden Tomb, or visit the poignant Yad Vashem Holocaust Memorial. (B,L,D)

**Day 9 - Haifa (Sea of Galilee/Nazareth), Israel, 7:00 a.m./8:00 p.m.**

Haifa is Israel's third-largest city - for a great view, climb to the top of Mt. Carmel. Sail on the Sea of Galilee and see the traditional Jordan River baptismal site; visit Nazareth, boyhood home of Jesus; Capernaum, the center of Jesus' ministry in the Galilee; or the Mount of Beatitudes, where the Sermon on the Mount was delivered. (B,L,D)



**Day 10 - At Sea.**

(B,L,D)

**Day 11 - Kusadasi (Ephesus), Turkey, 8:00 a.m./5:00 p.m.**

The ruins of the ancient city of Ephesus, one-time capital city of the Roman Province of Asia, are as impressive as you would imagine. In the magnificent excavations of this city (founded as early as the 10th century B.C.) you will see streets lined with wonderful public buildings such as the Baths of Scholastica, the Library of Celsus, the Temple of Hadrian, the Basilica of St. John and the Great Theatre where the Ephesians screamed against Paul (Acts 19:28). (B,L,D)

**Day 12 - Patmos, Greece, 8:00 a.m./5:00 p.m.**

Sometimes called the "Jerusalem of the Aegean," this gem in the Greek Isles is the former Roman prison island where John received his "Revelation." Visit the grotto named for his book and the Monastery of St. John which houses ancient manuscripts including an early one of the Gospel. (B,L,D)

**Day 13 - Santorini, Greece, 7:00 a.m./5:00 p.m.**

Santorini is the vision many people have of the Greek Isles. Its volcanic history has resulted in beaches where the sand may be white, red, or black; and the sunsets here are reputed to be the best in the world. Take a cable car up steep cliffs to delightful villages perched high above the Aegean. (B,L,D)

**Day 14 - Athens, disembark AM**

Arrive in Athens, which boasts 7,000 years of history, yet is still the most contemporary of cities. Upon disembarking, transfer to the airport for your return flight home. (B,meals aloft)

.....

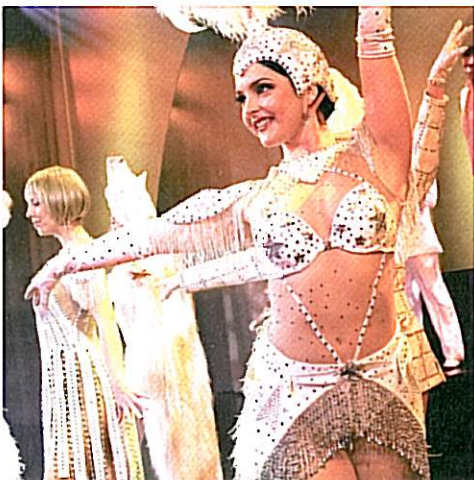
• You will be sailing aboard the intimate 710-passenger *Royal Princess* on your Rome to Athens Holy Land •  
 • adventure - a gem of a ship that provides a wonderful ambience with nearly three-quarters of her state- •  
 • rooms offering the extraordinary vantage of your own balcony. Enjoy the exquisite touches of a small •  
 • ship along with a "big ship" variety of choices! •  
 • .....

**Price of Cruise including port charges  
(per person based on double occupancy)**

***PLEASE NOTE THAT CERTAIN CABIN TYPES MAY BE LIMITED IN AVAILABILITY AND ARE ASSIGNED ON A FIRST COME, FIRST SERVE BASIS.***

**Please contact Dehoney Travel for pricing information.**

Not included in the above prices: Airfare, air taxes (dependent on departure city/travel dates, and subject to change prior to departure), government fees, transfers, and gratuities (approximately \$10.50 per day, collected aboard ship).



**E**scape completely.™

*If you have previously sailed with Princess and have a Princess Captain's Circle membership number, be sure to include it on your enrollment!*

## Terms and Conditions

**PAYMENT:** A deposit is required for booking. Full payment is due upon receipt of final invoice, approximately 12 weeks prior to departure.

**AIR ARRANGEMENTS:** Airfare and air taxes are not included in the cruise price. Princess Cruise Lines offers low air fare add-ons from most major U.S. cities. These fares will be compared with other options to ensure the best possible rate.

**DINING:** First seating is requested for all passengers unless Dehoney Travel, Inc. is notified to the contrary. Because Princess processes dining requests in the order in which they are received, dining requests are not guaranteed. All meals aboard ship are included.

**NOT INCLUDED IN CRUISE PRICE:** airfare & applicable air taxes; transfers, government fees; gratuities (approximately \$10.50 per day collected on board ship); Travel Protection Plan; items of a personal nature; and any other item not specifically listed as being included.

**TRAVEL DOCUMENTATION:** A current passport is required for this cruise.

**CHANGES:** A \$50 service fee will be charged for changes made to existing tours within 45 days of departure. Changes of departure date or tour are considered a cancellation and a new booking. The service fee will not be assessed when upgrading cruise accommodations.

**CANCELLATION:** In event of cancellation, there will be a fee of \$100 for Dehoney Travel, Inc. to cover administrative costs. In addition, without protection as outlined below, cancellations made from 95-80 days prior to departure will be charged the amount of \$250. Within 79-62 days prior to departure, \$1250. Within 61-34 days prior, 50% of the total tour cost, (including air add-on and tax) will be assessed. Within 33-20 days prior, 75% of the total tour cost, (including air add-on and tax) will be assessed; within 19 days to day of departure/no show, entire tour cost is non-refundable. Any trip interruption due to illness, accident or family emergency is subject to 100% of the unused balance of the total tour cost. **Please allow up to four weeks for cancellation refund processing.**

M E M B E R



PRINCESS CRUISES  
*escape completely*

**AIR TICKETS:** Air tickets will be subject to cancellation/re-booking penalties. The cost of any cancellation or changes made once the ticket has been issued will be charged to the passenger. Special requests are subject to a deviation fee by the air department. **After ticketing of international air, a cancellation penalty of 100% of the air fare is in effect. On or after the date of departure there can be no refund for any service not used.**

Princess Tours reserves the right to cancel any scheduled tour prior to departure. In the event that this should occur after final payment has been received by Princess Tours, all payments will be refunded in full. Princess Tours reserves the right to use alternate means of transportation when tour passenger numbers warrant such substitution and also reserves the right to change show performances when not available.

**TRAVEL PROTECTION PLAN:** As many U.S. health carriers do not provide benefits while outside the country and cancellation penalties can be substantial for many tours, Dehoney Travel recommends the purchase of Princess Travel Care travel protection. **You may decline the Travel Protection Plan, but a signed disclaimer is required and all charges for cancellation or medical treatment/transport are your responsibility.**

**RESPONSIBILITY:** Princess Cruises/Dehoney Travel, Inc. and/or travel bureaus offer the cruise/tour outlined solely as agent for the companies and persons that provide the transportation, transfers, accommodations, sightseeing excursions, and other goods and services comprising the tours. The responsibility of Princess Cruises and such companies and persons is set forth in the applicable voucher, coupon, receipt, ticket or tariff under which the particular goods and services are obtained. Details are available upon request.

Neither Princess Cruises, Dehoney Travel, Inc. nor their owners, directors, officers, agents, servants, employees, affiliates or representatives own, operate, manage, control, inspect, distribute or warrant any non-owned vehicle, vessel, aircraft or equipment, or any hotel, restaurant or other establishment, or any product, premises or service, provided directly or indirectly in connection with any tour; nor are they or any of them responsible or liable for any accident, injury, illness, death, loss, damage, expense, delay or other irregularity of any nature whatsoever arising directly or indirectly from such to or from any part thereof due to any cause whatsoever, including negligence.



Travel arrangements by  
Dehoney Travel

3008 Charlestown Crossing  
New Albany, IN 47150

Phone: 812/206-1080 or 800/325-6708

Fax: 812/206-1085

E-mail: [info@dehoneytravel.com](mailto:info@dehoneytravel.com)



5/15/08

CRUISES/Holy Land 09 bro gen web.indd