

Grand Mosaic

Lisbon to Rome

also visiting ports

Seville, Spain - Casablanca, Morocco

Gibraltar - Barcelona, Spain

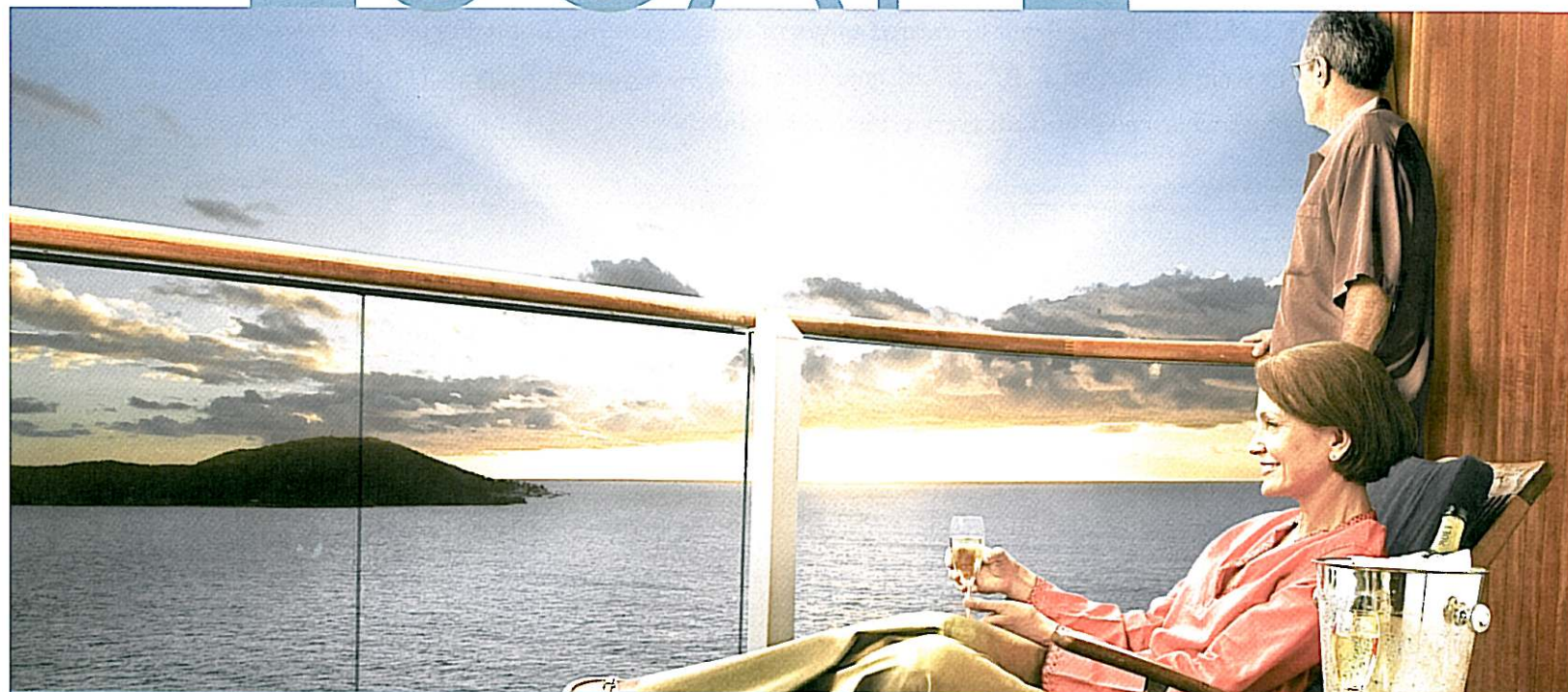
Marseille/Provence, France - Florence/Pisa, Italy

Malta, Italy - Sicily, Italy - Naples/Capri, Italy

aboard the *Crown Princess*

Set sail on an unforgettable Princess

ESCAPE



SPECTACULAR SHIPS • AFFORDABLE BALCONIES • WORLD-CLASS DINING & ENTERTAINMENT

*In the marvelous Mediterranean, every sunrise promises bliss...
You find it along the bustling streets of Barcelona and gazing at the imposing Rock of Gibraltar
- your sense of wonder and the thrill of discovering new vistas. The Mediterranean puts you at
ease, renews your spirit, and engages your intellect!*

Day 1 - Depart USA

(meals aloft)

Day 2 - Arrive Lisbon, embark 5:00 p.m.

Arrive in Lisbon today. Time permitting, explore the cobblestoned streets of the old Alfama district, or shop in the fashionable boutiques of the Baixa before transferring to the pier to board the *Crown Princess* for your 12-day Grand Mosaic cruise of Europe. (D)

Day 3 - Seville (Cadiz), Spain, 9:00 a.m./7:00 p.m.

According to legend, Seville was founded by Hercules. Wandering its countless palaces, cathedrals and parks, you'll fall in love with the city. (B,L,D)

Day 4 - Casablanca (Marrakech), Morocco, 7:00 a.m./8:00 p.m.

Visit Mohamed V Square and the white tombs of the Marabout in Casablanca. Or set out for the wonders of Moorish Marrakech. (B,L,D)

Day 5 - Gibraltar, 9:00 a.m./5:00 p.m.

With its combination of British and Spanish culture, grotto of St. Michael's Cave and those famous Barbary apes, Gibraltar is a wonderful surprise - all guarded of course by the great rock of Gibraltar, standing like a sentinel at the entrance to the Mediterranean. (B,L,D)

Day 6 - At Sea.

Participate in your choice of on-board activities: browse the world-class art collection, shop in duty-free boutiques, relax in a hot tub, sun yourself on the deck with a book from the ship's library, exercise in a state-of-the-art gym, or pamper yourself in the spa; and at mealtimes take advantage of the ship's variety of dining options. (B,L,D)

Day 7 - Barcelona, Spain, 7:00 a.m./5:00 p.m.

Gaudi and Picasso are just two names associated with this great Catalonian city - wander the fanciful pathways of Gaudi's Park Guell or visit the unfinished La Sagrada Familia cathedral or the Picasso Museum to see their work. (B,L,D)

Day 8 - Marseille (Provence), France, 7:00 a.m./5:00 p.m.

Wander the streets of France's oldest major port town or travel to inspiring Provence. Tour castles or Roman ruins, shop in markets of charming towns, or wine taste in idyllic vineyards. (B,L,D)



Day 9 - Florence/Pisa (Livorno), Italy, 7:00 a.m./7:00 p.m.

The spirits of Michelangelo and Da Vinci pervade the museums of Renaissance Florence. In Pisa, a certain Leaning Tower is the primary draw. (B,L,D)

Day 10 - At Sea.

(B,L,D)

Day 11 - Malta (Valletta), Italy, 8:00 a.m./5:00 p.m.

A UNESCO World Heritage Site, the capital of Malta has a wealth of churches and cathedrals, palaces, museums, gardens and piazzas. (B,L,D)

Day 12 - Sicily (Messina), Italy, 7:00 a.m./6:00 p.m.

From Messina, head for the charming town of Taormina, with its 15-century Palazzo Corvaia, or to the volcanic landscapes of Mt. Etna. (B,L,D)

Day 13 - Naples/Capri, Italy, 7:00 a.m./6:00 p.m.

From Naples, there are many ways to spend the day - at the ruins of Pompeii, on the arresting island of Capri, or traveling along the dazzling Amalfi Coast. (B,L,D)

Day 14 - Rome (Civitavecchia), disembark AM/Return USA

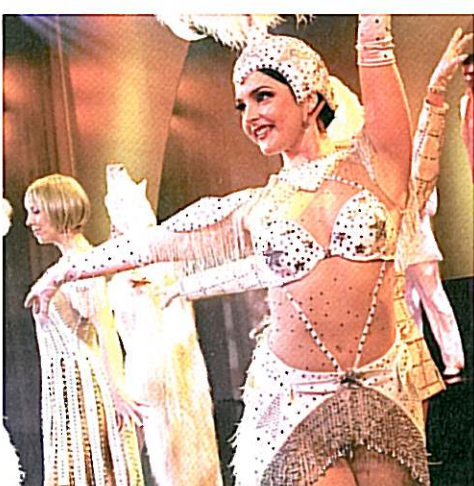
The Eternal City is a treasure of incredible landmarks. Time permitting, stop to see the Spanish Steps and Trevi Fountain before transferring to the airport for your return flight home. (B,meals aloft)

Crown Princess is the crown jewel of the Princess fleet. Its unique Crown Plaza is an atrium designed in the spirit of an Italian piazza where you can get a bite to eat or just relax and people-watch. Other highlights of this brand new ship include the Crown Grill, modeled after a classic steakhouse, the Sanctuary deck area, reserved just for adults, and Movies Under the Stars®, our poolside movie theater.

**Price of Cruise including port charges
(per person based on double occupancy):**

Please contact Dehoney Travel for pricing information

Not included in the above prices: Airfare, air taxes (dependent on departure city and subject to change), government fees, transfers, Princess fuel surcharge, and gratuities (collected aboard ship).



Escape completely.®

If you have previously sailed with Princess and have a Princess Captain's Circle membership number, be sure to include it on your enrollment!

Terms and Conditions

PAYMENT: A deposit is required for booking. Full payment is due upon receipt of final invoice, approximately 12 weeks prior to departure.

AIR ARRANGEMENTS: Airfare and air taxes are not included in the cruise price. Princess Cruise Lines offers low air fare add-ons from most major U.S. cities; air taxes (dependent on departure city and subject to change).

DINING: First seating is requested for all passengers unless Dehoney Travel, Inc. is notified to the contrary. Because Princess processes dining requests in the order in which they are received, dining requests are not guaranteed. All meals aboard ship are included.

NOT INCLUDED IN CRUISE PRICE: airfare & applicable air taxes; transfers; government fees; Princess fuel surcharge; gratuities (collected on board ship); Travel Protection Plan; items of a personal nature; and any other item not specifically listed as being included.

TRAVEL DOCUMENTATION: A current passport is required for this cruise.

CHANGES: A \$50 service fee will be charged for changes made to existing tours within 45 days of departure. Changes of departure date or tour are considered a cancellation and a new booking. The service fee will not be assessed when upgrading cruise accommodations.

CANCELLATION: In event of cancellation, there will be a fee of \$100 for Dehoney Travel, Inc. to cover administrative costs. In addition, without protection as outlined below, cancellations made from 95-80 days prior to departure will be charged the amount of \$250. Within 79-62 days prior to departure, \$750. Within 61-34 days prior, 50% of the total tour cost, (including air add-on and tax) will be assessed. Within 33-20 days prior, 75% of the total tour cost, (including air add-on and tax) will be assessed; within 19 days to day of departure/no show, entire tour cost is non-refundable. Any trip interruption due to illness, accident or family emergency is subject to 100% of the unused balance of the total tour cost. **Cancellation notification must be made in writing to Dehoney Travel. Please allow up to four weeks for cancellation refund processing.**

AIR TICKETS: Air tickets will be subject to cancellation/re-booking penalties. The cost of any cancellation or changes made once the ticket has been issued will be charged to the passenger. Special requests are subject to a deviation fee by the air department. **After ticketing of international air, a cancellation penalty of 100% of the air fare is in effect. On or after the date of departure there can be no refund for any service not used.**

Princess Tours reserves the right to cancel any scheduled tour prior to departure. In the event that this should occur after final payment has been received by Princess Tours, all payments will be refunded in full. Princess Tours reserves the right to use alternate means of transportation when tour passenger numbers warrant such substitution and also reserves the right to change show performances when not available.

TRAVEL PROTECTION PLAN: As many U.S. health carriers do not provide benefits while outside the country and cancellation penalties can be substantial for many tours, Dehoney Travel recommends the purchase of Princess Travel Care travel protection. **You may decline the Travel Protection Plan, but a signed disclaimer is required and all charges for cancellation or medical treatment/transport are your responsibility.**

RESPONSIBILITY: Princess Cruises/Dehoney Travel, Inc. and/or travel bureaus offer the cruise/tour outlined solely as agent for the companies and persons that provide the transportation, transfers, accommodations, sightseeing excursions, and other goods and services comprising the tours. The responsibility of Princess Cruises and such companies and persons is set forth in the applicable voucher, coupon, receipt, ticket or tariff under which the particular goods and services are obtained. Details are available upon request.

Neither Princess Cruises, Dehoney Travel, Inc. nor their owners, directors, officers, agents, servants, employees, affiliates or representatives own, operate, manage, control, inspect, distribute or warrant any non-owned vehicle, vessel, aircraft or equipment, or any hotel, restaurant or other establishment, or any product, premises or service, provided directly or indirectly in connection with any tour; nor are they or any of them responsible or liable for any accident, injury, illness, death, loss, damage, expense, delay or other irregularity of any nature whatsoever arising directly or indirectly from such to or from any part thereof due to any cause whatsoever, including negligence.



Travel arrangements by
Dehoney Travel
3008 Charlestown Crossing
New Albany, IN 47150
Phone: 812/206-1080 or 800/325-6708
Fax: 812/206-1085
E-mail: info@dehoneytravel.com
www.dehoneytravel.com

M E M B E R



10/17/08
#927
CRUISES/Grand Mosaic 09 bro gen web.indd

