

Mediterranean Collection

Venice to Rome

also visiting ports

Ravenna, Italy - Split, Croatia

Kotor, Montenegro - Corfu, Greece

Malta (Valletta), Italy - Sicily (Messina), Italy

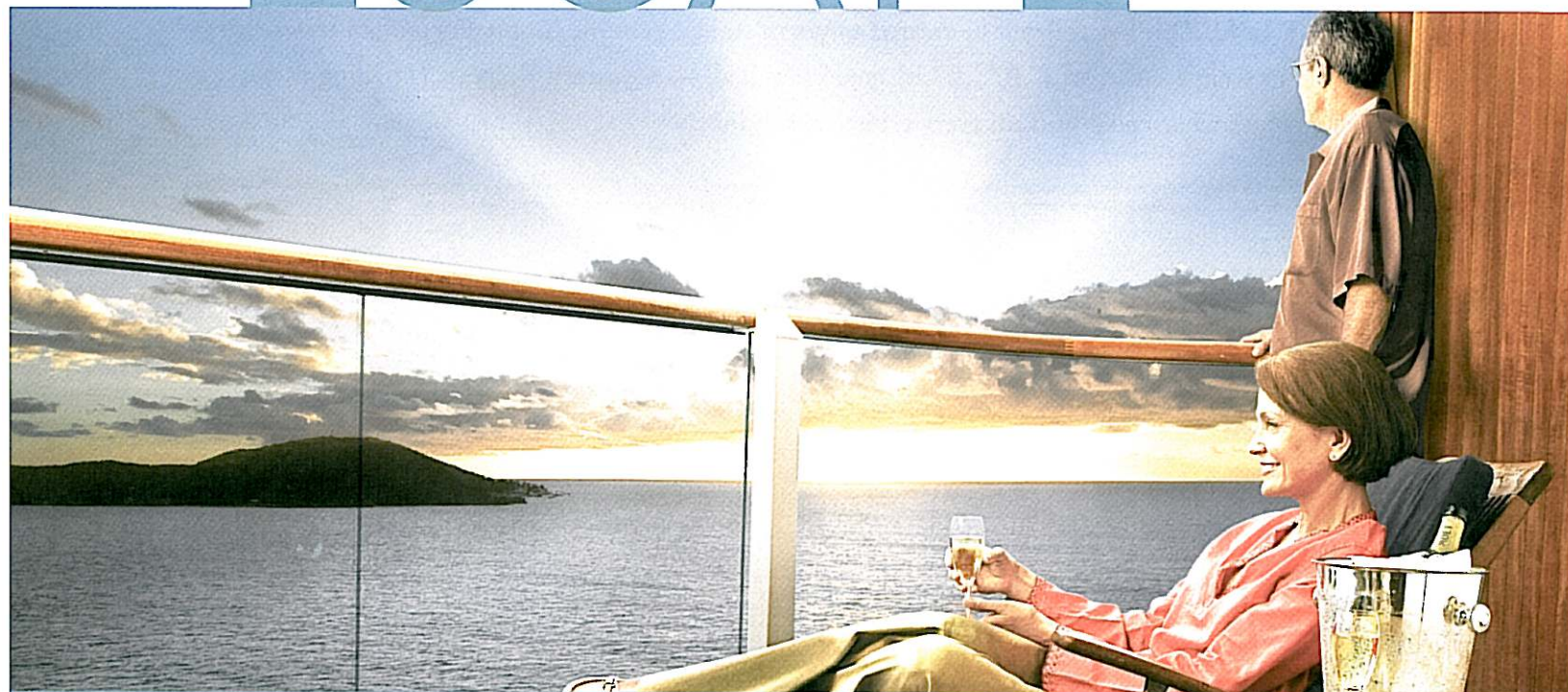
Sorrento/Capri, Italy - Corsica (Ajaccio) France

Monte Carlo, Monaco - Portofino, Italy

aboard the *Royal Princess*

Set sail on an unforgettable Princess

ESCAPE



SPECTACULAR SHIPS • AFFORDABLE BALCONIES • WORLD-CLASS DINING & ENTERTAINMENT

You'll find everything you've dreamed of and more in the marvelous Mediterranean - Greek and Roman ruins that defy imagination, ancient villages set on cobalt seas, incomparable cities like romantic Venice and the Adriatic jewel of Split, and picturesque vineyards and sun-kissed beaches. No one knows the region quite like Princess!

Day 1 - Depart USA

(meals aloft)

Day 2 - Arrive Venice, embark p.m.

Arrive in Venice, home to spellbinding canals, alleys, and piazzas. Transfer to the pier to board the *Royal Princess* for your 12-day Mediterranean Collection cruise of Europe. (D)

Day 3 - Ravenna, Italy, 7:00 a.m./6:00 p.m.

Alluring Ravenna is a UNESCO World Heritage Site - and with good reason. This colorful city boasts some of the globe's most dramatic Byzantine mosaics. (B,L,D)

Day 4 - Split, Croatia, 8:00 a.m./5:00 p.m.

The Diocletian's Palace, the Old City and two important archaeological museums are just some of the highlights of this Croatian city. (B,L,D)

Day 5 - Kotor, Montenegro, 8:00 a.m./5:00 p.m.

This coastal town in Montenegro has been one of the Adriatic's best preserved medieval towns, with its ancient city walls and Cathedral of Saint Tryphon. (B,L,D)

Day 6 - Corfu, Greece, 9:00 a.m./6:00 p.m.

Wide boulevards, sidewalk cafes, sparkling harbors and Venetian architecture welcome you to this anomaly of a Greek isle. (B,L,D)

Day 7 - At Sea.

Participate in your choice of on-board activities: browse the world-class art collection, shop in duty-free boutiques, relax in a hot tub, sun yourself on the deck with a book from the ship's library, exercise in a state-of-the-art gym, or pamper yourself in the spa; and at mealtimes take advantage of the ship's variety of dining options. (B,L,D)

Day 8 - Malta (Valletta), Italy, 8:00 a.m./5:00 p.m.

A UNESCO World Heritage Site, the capital of Malta has a wealth of churches and cathedrals, palaces, museums, gardens and piazzas. (B,L,D)

Day 9 - Sicily (Messina), Italy, 8:00 a.m./6:00 p.m.

From Messina, head for the charming town of Taormina, with its 15-century Palazzo Corvaia, or to the volcanic landscapes of Mt. Etna. (B,L,D)



Day 10 - Sorrento/Capri, Italy, 7:00 a.m./5:00 p.m.

From Sorrento's central Piazza Tasso, head out for a drive along the captivating Amalfi Coast. Or take a ferry to the famed isle of Capri. (B,L,D)

Day 11 - Corsica (Ajaccio), France, 12:00 p.m./7:00 p.m.

Napoleon Bonaparte was born here, and there are many attractions honoring this illustrious leader. And be sure to visit the wine region of Filitosa. (B,L,D)

Day 12 - Monte Carlo, Monaco, 7:00 a.m./6:00 p.m.

In Old Monaco, the principality ruled by the Grimaldis for over 500 years, enjoy great shopping, royal romance, and one of the world's most picturesque settings on the French Riviera. (B,L,D)

Day 13 - Portofino, Italy, 7:00 a.m./5:00 p.m.

Portofino on the Italian Riviera is a picture postcard come to life. Stroll through town and enjoy the leisurely pace of the Mediterranean day. (B,L,D)

Day 14 - Rome (Civitavecchia), disembark AM/Return USA

The Eternal City is a treasure of incredible landmarks. Time permitting, stop to see the Spanish Steps and Trevi Fountain before transferring to the airport for your return flight home. (B,meals aloft)

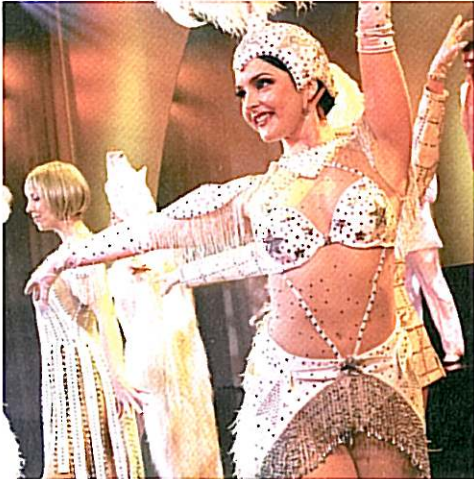
You will be sailing aboard the intimate 710-passenger *Royal Princess* on your Rome to Athens Holy Land adventure - a gem of a ship that provides a wonderful ambience with nearly three-quarters of her state-rooms offering the extraordinary vantage of your own balcony. Enjoy the exquisite touches of a small ship along with a "big ship" variety of choices!

**Price of Cruise including port charges
(per person based on double occupancy)**

PLEASE NOTE THAT CERTAIN CABIN TYPES MAY BE LIMITED IN AVAILABILITY AND ARE ASSIGNED ON A FIRST COME, FIRST SERVE BASIS.

Please contact Dehoney Travel for pricing information.

Not included in the above prices: Airfare, air taxes (dependent on departure city and subject to change), government fees, transfers, Princess fuel surcharge, and gratuities (collected aboard ship).



Escape completely.

If you have previously sailed with Princess and have a Princess Captain's Circle membership number, be sure to include it on your enrollment!

Terms and Conditions

PAYMENT: A deposit is required for booking. Full payment is due upon receipt of final invoice, approximately 12 weeks prior to departure.

AIR ARRANGEMENTS: Airfare and air taxes are not included in the cruise price. Princess Cruise Lines offers low air fare add-ons from most major U.S. cities; air taxes are dependent on departure city and subject to change.

DINING: First seating is requested for all passengers unless Dehoney Travel, Inc. is notified to the contrary. Because Princess processes dining requests in the order in which they are received, dining requests are not guaranteed. All meals aboard ship are included.

NOT INCLUDED IN CRUISE PRICE: airfare & applicable air taxes; transfers; government fees; Princess fuel surcharge; gratuities (collected on board ship); Travel Protection Plan; items of a personal nature; and any other item not specifically listed as being included.

TRAVEL DOCUMENTATION: A current passport is required for this cruise.

CHANGES: A \$50 service fee will be charged for changes made to existing tours within 45 days of departure. Changes of departure date or tour are considered a cancellation and a new booking. The service fee will not be assessed when upgrading cruise accommodations.

CANCELLATION: In event of cancellation, there will be a fee of \$100 for Dehoney Travel, Inc. to cover administrative costs. In addition, without protection as outlined below, cancellations made from 95-80 days prior to departure will be charged the amount of \$250. Within 79-62 days prior to departure, \$1,000. Within 61-34 days prior, 50% of the total tour cost, (including air add-on and tax) will be assessed. Within 33-20 days prior, 75% of the total tour cost, (including air add-on and tax) will be assessed; within 19 days to day of departure/no show, entire tour cost is non-refundable. Any trip interruption due to illness, accident or family emergency is subject to 100% of the unused balance of the total tour cost. **Cancellation notification must be made in writing to Dehoney Travel. Please allow up to four weeks for cancellation refund processing.**

AIR TICKETS: Air tickets will be subject to cancellation/re-booking penalties. The cost of any cancellation or changes made once the ticket has been issued will be charged to the passenger. Special requests are subject to a deviation fee by the air department. **After ticketing of international air, a cancellation penalty of 100% of the air fare is in effect. On or after the date of departure there can be no refund for any service not used.**

Princess Tours reserves the right to cancel any scheduled tour prior to departure. In the event that this should occur after final payment has been received by Princess Tours, all payments will be refunded in full. Princess Tours reserves the right to use alternate means of transportation when tour passenger numbers warrant such substitution and also reserves the right to change show performances when not available.

TRAVEL PROTECTION PLAN: As many U.S. health carriers do not provide benefits while outside the country and cancellation penalties can be substantial for many tours, Dehoney Travel recommends the purchase of Princess Travel Care travel protection. **You may decline the Travel Protection Plan, but a signed disclaimer is required and all charges for cancellation or medical treatment/transport are your responsibility.**

RESPONSIBILITY: Princess Cruises/Dehoney Travel, Inc. and/or travel bureaus offer the cruise/tour outlined solely as agent for the companies and persons that provide the transportation, transfers, accommodations, sightseeing excursions, and other goods and services comprising the tours. The responsibility of Princess Cruises and such companies and persons is set forth in the applicable voucher, coupon, receipt, ticket or tariff under which the particular goods and services are obtained. Details are available upon request.

Neither Princess Cruises, Dehoney Travel, Inc. nor their owners, directors, officers, agents, servants, employees, affiliates or representatives own, operate, manage, control, inspect, distribute or warrant any non-owned vehicle, vessel, aircraft or equipment, or any hotel, restaurant or other establishment, or any product, premises or service, provided directly or indirectly in connection with any tour; nor are they or any of them responsible or liable for any accident, injury, illness, death, loss, damage, expense, delay or other irregularity of any nature whatsoever arising directly or indirectly from such to or from any part thereof due to any cause whatsoever, including negligence.



Travel arrangements by
Dehoney Travel
3008 Charlestown Crossing
New Albany, IN 47150
Phone: 812/206-1080 or 800/325-6708
Fax: 812/206-1085
E-mail: info@dehoneytravel.com
www.dehoneytravel.com

M E M B E R



10/17/08
#929
CRUISES/Med Collection 09 bro gen web.indd

